



**EkoMed**  
Textile



[www.ekomedglobal.com](http://www.ekomedglobal.com)



# What's Inside

<b>02</b>	Who We Are	<b>07-24</b>	Sweatshirts and Hoodies
<b>03</b>	Social Responsibility	<b>25-29</b>	Polos
<b>04</b>	About textile	<b>30-35</b>	Uniforms
<b>05</b>	Material Descriptions	<b>36-39</b>	Others
<b>06</b>	Our Products	<b>37-42</b>	Biodegradable material
<b>07-11</b>	T-shirts	<b>43</b>	Canada Headquarter Address
<b>02-16</b>	Teams wear	<b>44</b>	China Facility
	<b>45-46</b>	<i>Logiestic and Transportation Facility</i>	
	<b>47</b>	<i>Ekomed Global Contacts</i>	



care  
that never quits...



**We care about your vision**



**EkoMed**  
Textile

# Who we are

EkoMed Global is a globally integrated Manufacturer of Wearable products and a service provider of Textile Worldwide. At EkoMed Global, we focus on designing and manufacturing a wide range of Wearable Products And textile Procedures. At EkoMed Global, we are aware of the current need for new And innovative Wearable Products, so we are always adding to our product portfolio. All the production processes are managed and monitored inhouse with ISO 9001 standards.

Our Primary goal is to provide reliable, qualitative, and continuous production within a overcapacity safe environment for the end-user. Our Headquarters is situated in Burlington, Canada . with the manufacturing plant and Sterilization Facility in Hangzhou, China. Within Canada and China, EkoMed has warehouses and operating offices. It is more than a slogan ...

Care that never quits ... We care about your safety!



# Social responsibility



Ekomed Global always takes the ethical approach towards environmental events, human rights, and economical sensitivity. Ekomed is working to improve the quality and development of our community and the surrounding society we live in, We are educating ourselves to follow and exceed the standards of SA 80000:2014

Care that never quits ... We care about your safety!

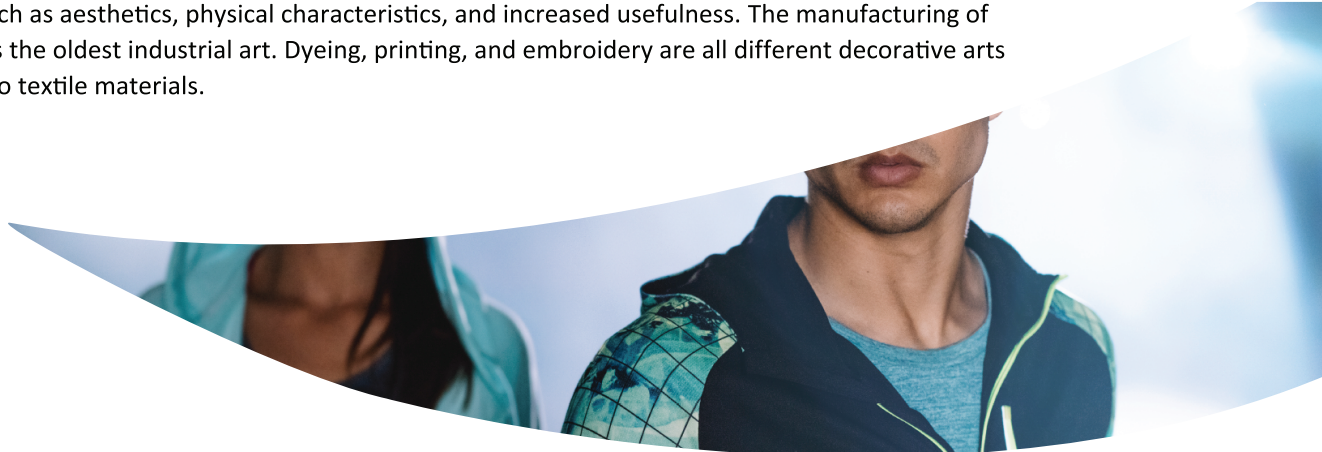
# About Textile

Textile is an umbrella term that includes various fiber-based materials, including fibers, yarns, filaments, threads, different fabric types, etc. At first, the word "textiles" only referred to woven fabrics. However, weaving is not the only manufacturing method, and many other methods were later developed to form textile structures based on their intended use. Knitting and non-woven are other popular types of fabric manufacturing. In the contemporary world, textiles satisfy the material needs for versatile applications, from simple daily clothing to bulletproof jackets, spacesuits, and doctor's gowns.

Textiles are divided into two groups: consumer textiles for domestic purposes and technical textiles. In consumer textiles, aesthetics and comfort are the most important factors, while in technical textiles, functional properties are the priority.

Geotextiles, industrial textiles, medical textiles, and many other areas are examples of technical textiles, whereas clothing and furnishings are examples of consumer textiles. Each component of a textile product, including fiber, yarn, fabric, processing, and finishing, affects the final product. Components may vary among various textile products as they are selected based on their fitness for purpose.[4][7][6]

Fiber is the smallest component of a fabric; fibers are typically spun into yarn, and yarns are used to manufacture fabrics. Fiber has a hair-like appearance and a higher length-to-width ratio. The sources of fibers may be natural, synthetic, or both. The techniques of felting and bonding directly transform fibers into fabric. In other cases, yarns are manipulated with different fabric manufacturing systems to produce various fabric constructions. The fibers are twisted or laid out to make a long, continuous strand of yarn. Yarns are then used to make different kinds of fabric by weaving, knitting, crocheting, knotting, tating, or braiding. After manufacturing, textile materials are processed and finished to add value, such as aesthetics, physical characteristics, and increased usefulness. The manufacturing of textiles is the oldest industrial art. Dyeing, printing, and embroidery are all different decorative arts applied to textile materials.





# Material Descriptions

Deciding which type of fabric to make an item with is an important decision, as fabrics can have countless qualities. From natural to synthetic fibers and from knit to woven, here's a look at different fabric types and how to identify them. Some of the popular material.

.Leather

.Linen

.Wool

.Satin

.Silk

.Suede

.Towill

.Velvet

.Viscose

.Fleece

.Canvas

.Cotton

.Polyester

.Spandex

.Cashmere

.Chifon

.Jersey

.Lace

# Our Products



## T-shirt

100% Cotton  
Ploy Cotton 50/50  
Combed Cotton  
Organic Cotton



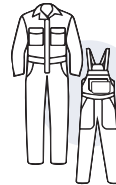
## Polos

100% Cotton  
Ploy Cotton 50/50



## Teamwear Jersey

Polyester  
V-Neck  
Crew Neck  
long Sleeve



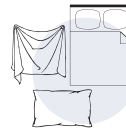
## Uniforms

Industrial  
Overall  
Pants  
Shirts  
Chef coats



## Hoodies and SweetShirts

Polyester  
Fleece  
Cotton

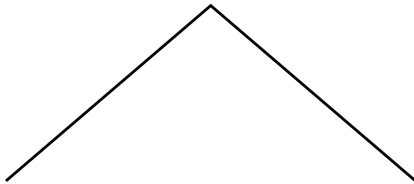
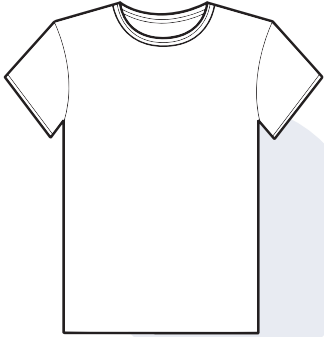


## OTHERS

Courtans  
Bed sheets  
Pillows



## Biodegradable t-shirt



# T-shirt

100% Cotton  
Ploy Cotton 50/50  
Combed Cotton  
Organic Cotton



# T-shirt

# 100% Cotton



9.1-oz, 100% cotton  
 Compacted yarns to minimize shrinkage  
 Taped neck and shoulders  
 Tear away label  
 Side seamed and Tubular  
 Classic fit

**Product Features:**

- 9.1-oz, 100% cotton
- Compacted yarns to minimize shrinkage

Adult sizes: S-6XL

**Icons/Fabric Features:**



**Ekomed Global Inc.**

**GARMENT MEASUREMENTS**

Size	S	M	L	XL	2XL	3XL	4XL	5XL	6XL
<b>Chest - Half Measure</b>	18"	20"	22"	24"	26"	28"	30"	32"	34"
<b>Chest - Full Measure</b>	36"	40"	44"	48"	52"	56"	60"	64"	68"
<b>Body Length from HPS</b>	29"	30"	31"	32"	33"	34"	35"	36"	37"
<b>Sleeve Length from Shoulder Seam to Hem</b>	8 1/2"	8 1/2"	8 1/2"	8 1/2"	8 1/2"	8 1/2"	8 1/2"	8 1/2"	8 1/2"

*Finished measurements in inches. Refer to "How to Measure" guide for detailed information on measurement instructions.*

**ADULT General Sizing Guide**

Size	S	M	L	XL	2XL	3XL	4XL	5XL	6XL
<b>Chest</b>	34"-36"	38"-40"	42"-44"	46"-48"	50"-52"	54"-55"	56"-57"	58"-61"	61"-64"
<b>Waist</b>	29"-32"	32"-35"	35"-38"	38"-41"	41"-44"	44"-47"	47"-50"	50"-53"	53"-56"
<b>Sleeve Length-CB</b>	32"-33 1/2"	34"-35"	35"-36"	36"-37"	37"-38"	38"-39"	38 1/2"-39"	39"-39 1/2"	39 1/2"-40"



# Poly Cotton 50/50

# T-shirt

9.1-oz, 50/50 cotton/polyester  
 Compacted yarns to minimize shrinkage  
 Comfort Dry fabric blend offers breathability  
 Taped neck and shoulders  
 Tear away label  
 Side seamed and Tubular



### Product Features:

- 9.1-oz, 60/40 cotton/polyester
- Compacted yarns to minimize shrinkage
- Comfort Dry fabric blend offers breathability and wicks moisture away from skin

Adult sizes: S-6XL

### Icons/Fabric Features:



## Ekomed Global Inc.

### GARMENT MEASUREMENTS

Size	S	M	L	XL	2XL	3XL	4XL	5XL	6XL
Chest - Half Measure	19"	20"	22"	24"	26"	28"	30"	32"	34"
Chest - Full Measure	36"	40"	44"	48"	52"	56"	60"	64"	68"
Body Length from HPS	29"	30"	31"	32"	33"	34"	35"	36"	37"
Sleeve Length from Shoulder Seam to Hem	8 1/2"	8 1/2"	8 1/2"	8 1/2"	8 1/2"	8 1/2"	8 1/2"	8 1/2"	8 1/2"

Finished measurements in inches. Refer to "How to Measure" guide for detailed information on measurement instructions.

### ADULT General Sizing Guide

Size	S	M	L	XL	2XL	3XL	4XL	5XL	6XL
Chest	34"-36"	38"-40"	42"-44"	46"-48"	50"-52"	54"-55"	56"-57"	58"-61"	61"-64"
Waist	29"-32"	32"-35"	35"-38"	38"-41"	41"-44"	44"-47"	47"-50"	50"-53"	53"-56"
	32"-33 1/2"	34"-35"	35"-36"	36"-37"	37"-38"	38"-39"	38 1/2"-39"	39"-39 1/2"	39 1/2"-40"

# T-shirt

# Combed Cotton

5.7-oz, Combed Cotton  
 Soft 30 single triblend jersey  
 Taped neck and shoulders  
 Superior printing surface  
 Side seamed and Tubular

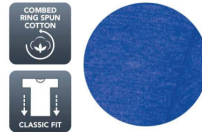


### Product Features:

- 5.7-oz, 50/25/25 polyester/cotton/rayon
- Combed and ring spun cotton
- Soft 30 single triblend jersey
- Extra soft triblend knit

Adult sizes: XS-4XL

### Icons/Fabric Features:



## Ekomed Global Inc.

### GARMENT MEASUREMENTS

Size	S	M	L	XL	2XL	3XL	4XL	5XL	6XL
Chest - Half Measure	18"	20"	22"	24"	26"	28"	30"	32"	34"
Chest - Full Measure	36"	40"	44"	48"	52"	56"	60"	64"	68"
Body Length from HPS	29"	30"	31"	32"	33"	34"	35"	36"	37"
Sleeve Length from Shoulder Seam to Hem	8 1/2"	8 1/2"	8 1/2"	8 1/2"	8 1/2"	8 1/2"	8 1/2"	8 1/2"	8 1/2"

Finished measurements in inches. Refer to "How to Measure" guide for detailed information on measurement instructions.

### ADULT General Sizing Guide

Size	S	M	L	XL	2XL	3XL	4XL	5XL	6XL
Chest	34"-36"	38"-40"	42"-44"	46"-48"	50"-52"	54"-55"	56"-57"	58"-61"	61"-64"
Waist	29"-32"	32"-35"	35"-38"	38"-41"	41"-44"	44"-47"	47"-50"	50"-53"	53"-56"
Sleeve Length-CB	32"-33 1/2"	34"-35"	35"-36"	36"-37"	37"-38"	38"-39"	38 1/2"-39"	39"-39 1/2"	39 1/2"-40"

# Organic Cotton

# T-shirt

7.9-oz, Organic Cotton  
 Dri-FIT sweat wicking jersey  
 Tagless  
 Modern fit  
 Side seamed and Tubular



**Product Features:**

- 7.9-oz, 54/40/6 cotton/polyester/organic cotton Dri-FIT sweat wicking jersey
- Double needle stitching throughout

Adult Sizes: XS-4XL

**Icons/Fabric Features:**



## Ekomed Global Inc.

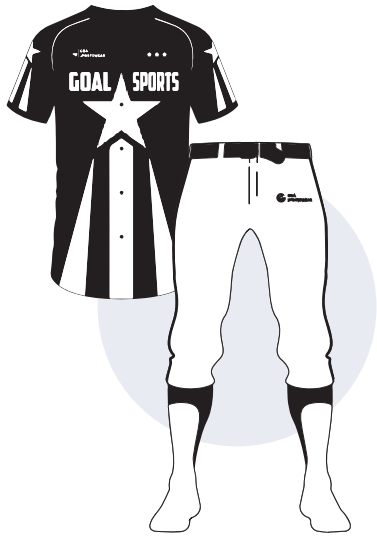
**GARMENT MEASUREMENTS**

Size	S	M	L	XL	2XL	3XL	4XL	5XL	6XL
Chest - Half Measure	18"	20"	22"	24"	26"	28"	30"	32"	34"
Chest - Full Measure	36"	40"	44"	48"	52"	56"	60"	64"	68"
Body Length from HPS	29"	30"	31"	32"	33"	34"	35"	36"	37"
Sleeve Length from Shoulder Seam to Hem	8 1/2"	8 1/2"	8 1/2"	8 1/2"	8 1/2"	8 1/2"	8 1/2"	8 1/2"	8 1/2"

Finished measurements in inches. Refer to "How to Measure" guide for detailed information on measurement instructions.

**ADULT General Sizing Guide**

Size	S	M	L	XL	2XL	3XL	4XL	5XL	6XL
Chest	34"-36"	38"-40"	42"-44"	46"-48"	50"-52"	54"-55"	56"-57"	58"-61"	61"-64"
Waist	29"-32"	32"-35"	35"-38"	38"-41"	41"-44"	44"-47"	47"-50"	50"-53"	53"-56"
Sleeve Length-CB	32"-33 1/2"	34"-35"	35"-36"	36"-37"	37"-38"	38"-39"	38 1/2"-39"	39"-39 1/2"	39 1/2"-40"



# Teamswear

Polyester  
V-Neck  
Crew Neck  
Long Sleeve





# Polyester

# Teamswear

6.3-oz, 100% performance polyester  
 Wicking technology  
 No Bleed Fabric (NBF)  
 Created with a unique cationic  
 Dye process for easy printing  
 Flat lock seams  
 Tagless



#### Product Features:

- 6.3-oz, 100% performance polyester jersey with wicking technology
- No Bleed Fabric (NBF) created with a unique cationic dye process for easy printing
- Contrast panel at shoulders and sides

Adult sizes: XS-4XL



#### Icons/Fabric Features



## Ekomed Global Inc.

#### GARMENT MEASUREMENTS

Size	XS	S	M	L	XL	2XL	3XL	4XL
Chest - Half Measure	18 1/2"	20"	21 1/2"	23"	24 1/2"	26"	28"	30"
Chest - Full Measure	37"	40"	43"	46"	49"	52"	56"	60"
Body Length from HPS	26"	27"	28"	29"	30"	31"	31 1/2"	32"
Sleeve Length-CB	16 3/4"	17 1/2"	18 1/4"	19"	19 3/4"	20 1/2"	21 1/4"	22"

*Finished measurements in inches. Refer to "How to Measure" guide for detailed information on measurement instructions.*

#### ADULT General Sizing Guide

Size	XS	S	M	L	XL	2XL	3XL	4XL
Chest	30"-32"	34"-36"	38"-40"	42"-44"	46"-48"	50"-52"	54"-55"	56"-57"
Waist	26"-29"	29"-32"	32"-35"	35"-38"	38"-41"	41"-44"	44"-47"	47"-50"
Sleeve Length-CB	31"-32"	32"-33 1/2"	34"-35"	35"-36"	36"-37"	37"-38"	38"-39"	38 1/2"-39"

# Teamswear


## V-neck

6.3-oz, 100% performance polyester  
 Wicking technology  
 No Bleed Fabric (NBF)  
 Created with a unique cationic  
 Dye process for easy printing  
 Flat lock seams  
 Tagless

Mitered V-Neck pattern



### Product Features:

- 6.6-oz, 100% performance polyester jersey
- Reflective dot matrix pattern at centre back
- Reflective  heat transfer at back neck

Ladies' sizes: XS-4XL

### Icons/Fabric Features:



## Ekomed Global Inc.

### GARMENT MEASUREMENTS

Size	XS	S	M	L	XL	2XL	3XL	4XL
Chest - Half Measure	16 1/2"	17 1/2"	18 1/2"	20"	21 1/2"	23"	25"	27"
Chest - Full Measure	33"	35"	37"	40"	43"	46"	50"	54"
Body Length from HPS	26"	26 1/2"	27"	27 1/2"	28"	28 1/2"	29"	29 1/2"
Sleeve Length-CB	12 1/2"	13"	13 1/2"	14 1/8"	14 3/4"	15 3/8"	16"	16 5/8"

Finished measurements in inches. Refer to "How to Measure" guide for detailed information on measurement instructions.

### LADIES' General Sizing Guide

Size	XS	S	M	L	XL	2XL	3XL	4XL
Numeric Size	2	4-6	8-10	12-14	16	18-20	22	24
Bust	32"-34"	35"-36"	37"-38"	39"-41"	42"-44"	45"-47"	48"-51"	52"-55"
Waist	24"-25"	26"-27"	28"-30"	30"-32"	33"-35"	36"-38"	40"-42"	42"-44"
Hip	33"-35"	35"-37"	37"-39"	39"-41"	42"-44"	45"-47"	48"-50"	50"-52"
Sleeve Length-CB	30"-30 1/2"	30 1/2"-31"	31 1/2"-32"	32 1/2"-33"	33 1/2"-34"	34"-34 1/2"	34 1/2"-35"	34 1/2"-35"

# Crew neck

# Teamswear

6.3-oz, 100% performance polyester  
 Wicking technology  
 No Bleed Fabric (NBF)  
 Created with a unique cationic  
 Dye process for easy printing  
 Flat lock seams  
 Tagless



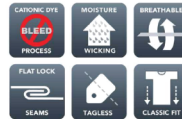
#### Product Features:

- 6.3-oz, 100% performance polyester jersey with wicking technology
- No Bleed Fabric (NBF) created with a unique cationic dye process for easy printing
- Contrast panel at shoulders and sides

Adult sizes: XS-4XL



#### Icons/Fabric Features



## Ekomed Global Inc.

#### GARMENT MEASUREMENTS

Size	XS	S	M	L	XL	2XL	3XL	4XL
Chest - Half Measure	18 1/2"	20"	21 1/2"	23"	24 1/2"	26"	28"	30"
Chest - Full Measure	37"	40"	43"	46"	49"	52"	56"	60"
Body Length from HPS	26"	27"	28"	29"	30"	31"	31 1/2"	32"
Sleeve Length-CB	16 3/4"	17 1/2"	18 1/4"	19"	19 3/4"	20 1/2"	21 1/4"	22"

Finished measurements in inches. Refer to "How to Measure" guide for detailed information on measurement instructions.

#### ADULT General Sizing Guide

Size	XS	S	M	L	XL	2XL	3XL	4XL
Chest	30"-32"	34"-36"	38"-40"	42"-44"	46"-48"	50"-52"	54"-55"	56"-57"
Waist	26"-29"	29"-32"	32"-35"	35"-38"	38"-41"	41"-44"	44"-47"	47"-50"
Sleeve Length-CB	31"-32"	32"-33 1/2"	34"-35"	35"-36"	36"-37"	37"-38"	38"-39"	38 1/2"-39"



Double needle cover stitch through bottom hem and cuffs



**S350LS**

**Product Features:**

- 6.3-oz, 100% performance polyester jersey with wicking technology
- No Bleed Fabric (NBF) created with a unique cationic dye process for easy printing
- Side seamed

Adult sizes: XS-4XL

**Icons/Fabric Features:**



6.3-oz, 100% performance polyester jersey with wicking technology  
 No Bleed Fabric (NBF)  
 Side seamed  
 Tagless

## Ekomed Global Inc.

**GARMENT MEASUREMENTS**

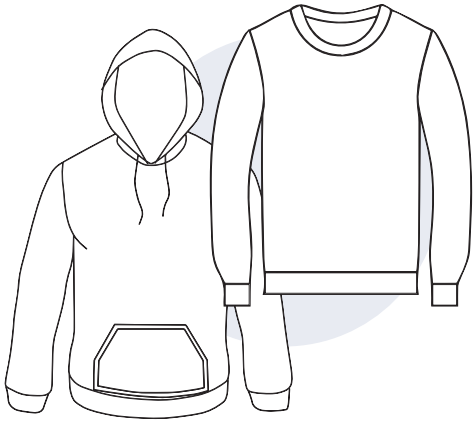
Size	XS	S	M	L	XL	2XL	3XL	4XL
<b>Chest - Half Measure</b>	18 1/2"	20"	21 1/2"	23"	24 1/2"	26"	28"	30"
<b>Chest - Full Measure</b>	38"	40"	44"	46"	49"	52"	56"	60"
<b>Body Length from HPS</b>	27"	28"	29"	30"	31"	32"	32 1/2"	33"
<b>Sleeve Length-CB</b>	33 1/4"	34"	34 3/4"	35 1/2"	36 1/4"	37"	37 3/4"	38 1/2"

*Finished measurements in inches. Refer to "How to Measure" guide for detailed information on measurement instructions.*

**ADULT General Sizing Guide**

Size	XS	S	M	L	XL	2XL	3XL	4XL
<b>Chest</b>	30"-32"	34"-36"	38"-40"	42"-44"	46"-48"	50"-52"	54"-55"	56"-57"
<b>Waist</b>	26"-29"	29"-32"	32"-35"	35"-38"	38"-41"	41"-44"	44"-47"	47"-50"
<b>Sleeve Length-CB</b>	31"-32"	32"-33 1/2"	34"-35"	35"-36"	36"-37"	37"-38"	38"-39"	38 1/2"-39"





# SweetShirts

## Hoodies

Polyester

Fleece

Cotton

Zipper



# SweetShirts

# Ployester

15.7-oz, polyester fleece  
 Combed and RING SPUN cotton  
 Tear away label  
 Superior printing surface  
 Classic fit  
 \*\*85/12/3 cotton/polyester/viscose



**Product Features:**

- 13.3-oz, 50/50 cotton/polyester fleece
- Air jet spun yarn for a softer feel and reduced pilling
- Rib knit cuffs, collar and waistband
- Quarter-turned

Adult Sizes: S-5XL

**Icons/Fabric Features:**



**Ekomed Global Inc.**

**GARMENT MEASUREMENTS**

Size	S	M	L	XL	2XL	3XL	4XL	5XL
Chest - Half Measure	20"	22"	24"	26"	28"	30"	32"	34"
Chest - Full Measure	40"	44"	48"	52"	56"	60"	64"	68"
Body Length from HPS	27"	28"	29"	30"	31"	32"	33"	34"
Sleeve Length-CB	33 1/2"	34 1/2"	35 1/2"	36 1/2"	37 1/2"	38 1/2"	39 1/2"	40 1/2"

*Finished measurements in inches. Refer to "How to Measure" guide for detailed information on measurement instructions.*

**ADULT General Sizing Guide**

Size	S	M	L	XL	2XL	3XL	4XL	5XL
Chest	34"-36"	38"-40"	42"-44"	46"-48"	50"-52"	54"-55"	56"-57"	58"-61"
Waist	29"-32"	32"-35"	35"-38"	38"-41"	41"-44"	44"-47"	47"-50"	50"-53"
Sleeve Length-CB	32"-33 1/2"	34"-35"	35"-36"	36"-37"	37"-38"	38"-39"	38 1/2"-39"	39"-39 1/2"

# Fleece

# SweetShirts

15.7-oz, polyester fleece  
 Combed and RING SPUN cotton  
 Tear away label  
 Superior printing surface  
 Classic fit  
 \*\*85/12/3 cotton/polyester/viscose



**Product Features:**

- 15.7-oz, 60/40 cotton/polyester fleece
- Combed and ring spun cotton

Adult sizes: XS-4XL

**Icons/Fabric Features:**



## Ekomed Global Inc.

**GARMENT MEASUREMENTS**

Size	S	M	L	XL	2XL	3XL	4XL	5XL
<b>Chest - Half Measure</b>	20"	22"	24"	26"	28"	30"	32"	34"
<b>Chest - Full Measure</b>	40"	44"	48"	52"	56"	60"	64"	68"
<b>Body Length from HPS</b>	27"	28"	29"	30"	31"	32"	33"	34"
<b>Sleeve Length-CB</b>	33 1/2"	34 1/2"	35 1/2"	36 1/2"	37 1/2"	38 1/2"	39 1/2"	40 1/2"

*Finished measurements in inches. Refer to "How to Measure" guide for detailed information on measurement instructions.*

**ADULT General Sizing Guide**

Size	S	M	L	XL	2XL	3XL	4XL	5XL
<b>Chest</b>	34"-36"	38"-40"	42"-44"	46"-48"	50"-52"	54"-55"	56"-57"	58"-61"
<b>Waist</b>	29"-32"	32"-35"	35"-38"	38"-41"	41"-44"	44"-47"	47"-50"	50"-53"
<b>Sleeve Length-CB</b>	32"-33 1/2"	34"-35"	35"-36"	36"-37"	37"-38"	38"-39"	38 1/2"-39"	39"-39 1/2"

# SweetShirts

# Cotton

9.8-oz, 60/40 cotton/lightweight fleece  
 Combed and RING SPUN cotton  
 Flat lock seams  
 Superior printing surface  
 Modern fi



#### Product Features:

- 9.8 oz, 60/40 cotton/polyester lightweight fleece
- Combed and ring spun cotton
- Ultra soft 32 single cotton

Adult sizes: XS-4XL

#### Icons/Fabric Features:



## Ekomed Global Inc.

### GARMENT MEASUREMENTS

Size	XS	S	M	L	XL	2XL	3XL	4XL
<b>Chest - Half Measure</b>	17 3/4"	19 1/4"	20 3/4"	22 1/4"	23 3/4"	25 1/4"	27 1/4"	29 1/4"
<b>Chest - Full Measure</b>	35 1/2"	38 1/2"	41 1/2"	44 1/2"	47 1/2"	50 1/2"	54 1/2"	58 1/2"
<b>Body Length from HPS</b>	27"	28"	29"	30"	31"	32"	32 1/2"	33"
<b>Sleeve Length-CB</b>	34 1/4"	35"	35 3/4"	36 1/2"	37 1/4"	38"	38 3/4"	39 1/2"

*Finished measurements in inches. Refer to "How to Measure" guide for detailed information on measurement instructions.*

### ADULT General Sizing Guide

Size	XS	S	M	L	XL	2XL	3XL	4XL
<b>Chest</b>	30"-32"	34"-36"	38"-40"	42"-44"	46"-48"	50"-52"	54"-55"	56"-57"
<b>Waist</b>	26"-29"	29"-32"	32"-35"	35"-38"	38"-41"	41"-44"	44"-47"	47"-50"
<b>Sleeve Length-CB</b>	31"-32"	32"-33 1/2"	34"-35"	35"-36"	36"-37"	37"-38"	38"-39"	38 1/2"-39"

# polyester

# Hoodies

12-oz, 100% performance polyester double-knit  
 Unlined hood with drawstring  
 Moisture wicking  
 Breathable  
 Classic fit



**Product Features:**

- 12-oz, 100% performance polyester double-knit fleece
- Special ATC™ panel hood for easy decoration
- Partial self-fabric neck taping
- Front pouch pocket
- 1x1 rib knit waistband
- Reinforced topstitching throughout
- ATC™ locker loop neck label

Adult sizes: XS-4XL

**Icons/Fabric Features:**



## Ekomed Global Inc.

**GARMENT MEASUREMENTS**

Size	XS	S	M	L	XL	2XL	3XL	4XL
Chest - Half Measure	20 1/2"	22"	23 1/2"	25"	26 1/2"	28"	30"	32"
Chest - Full Measure	41"	44"	47"	50"	53"	56"	60"	64"
Body Length from HPS	28"	28 1/2"	29"	29 1/2"	30 1/2"	31 1/2"	32"	32 1/2"
Sleeve Length-CB	35"	35 3/4"	36 1/2"	37 1/4"	38"	38 3/4"	39 1/4"	39 3/4"

*Finished measurements in inches. Refer to "How to Measure" guide for detailed information on measurement instructions.*

**ADULT General Sizing Guide**

Size	XS	S	M	L	XL	2XL	3XL	4XL
Chest	30"-32"	34"-36"	38"-40"	42"-44"	46"-48"	50"-52"	54"-55"	56"-57"
Waist	26"-29"	29"-32"	32"-35"	35"-38"	38"-41"	41"-44"	44"-47"	47"-50"
Sleeve Length-CB	31"-32"	32"-33 1/2"	34"-35"	35"-36"	36"-37"	37"-38"	38"-39"	38 1/2"-39"



# Hoodies

# Fleece

13-oz, 50/50 cotton/polyester fleece  
 Compacted yarns to minimize shrinkage  
 Double lined hood with drawstring  
 Anti-pill  
 Classic fit



## ATCF2500

### Product Features:

- 13-oz, 50/50 cotton/polyester fleece
- Compacted yarns to minimize shrinkage

Adult sizes: S-4XL

### Icons/Fabric Features:



## Ekomed Global Inc.

### GARMENT MEASUREMENTS

Size	S	M	L	XL	2XL	3XL	4XL
Chest - Half Measure	20"	22"	24"	26"	28"	30"	32"
Chest - Full Measure	40"	44"	48"	52"	56"	60"	64"
Body Length from HPS (At back)	27 1/2"	28 1/2"	29 1/2"	30 1/2"	31 1/2"	32 1/2"	33 1/2"
Sleeve Length-CB	34 1/2"	35 1/4"	36"	36 3/4"	37 1/2"	38 1/4"	39"

Finished measurements in inches. Refer to "How to Measure" guide for detailed information on measurement instructions.

### ADULT General Sizing Guide

Size	S	M	L	XL	2XL	3XL	4XL
Chest	34"-36"	38"-40"	42"-44"	46"-48"	50"-52"	54"-55"	56"-57"
Waist	29"-32"	32"-35"	35"-38"	38"-41"	41"-44"	44"-47"	47"-50"
Sleeve Length-CB	32"-33 1/2"	34"-35"	35"-36"	36"-37"	37"-38"	38"-39"	38 1/2"-39"

# Cotton

# Hoodies

15.7-oz, 60/40 cotton fleece  
 Combed and RING SPUN cotton  
 Tear away label  
 Superior printing surface  
 Classic fit  
 \*80/20 cotton/polyester



#### Product Features:

- 15.7-oz, 60/40 cotton/polyester fleece
- Combed and ring spun cotton
- Tear away label

Adult sizes: XS-4XL

#### Icons/Fabric Features:



## Ekomed Global Inc.

#### GARMENT MEASUREMENTS

Size	XS	S	M	L	XL	2XL	3XL	4XL
Chest - Half Measure	19 1/2"	21"	22 1/2"	24"	25 1/2"	27"	29"	31"
Chest - Full Measure	39"	42"	45"	48"	51"	54"	58"	62"
Body Length from HPS	28 1/2"	29"	29 1/2"	30"	31"	32"	32 1/2"	33"
Sleeve Length-CB	34 3/4"	35 1/2"	36 1/4"	37"	37 3/4"	38 1/2"	39"	39 1/2"

*Finished measurements in inches. Refer to 'How to Measure' guide for detailed information on measurement instructions.*

#### ADULT General Sizing Guide

Size	XS	S	M	L	XL	2XL	3XL	4XL
Chest	30"-32"	34"-36"	38"-40"	42"-44"	46"-48"	50"-52"	54"-55"	56"-57"
Waist	26"-29"	29"-32"	32"-35"	35"-38"	38"-41"	41"-44"	44"-47"	47"-50"
Sleeve Length-CB	31"-32"	32"-33 1/2"	34"-35"	35"-36"	36"-37"	37"-38"	38"-39"	38 1/2"-39"



# Hoodies

# Zipper/Cotton/Fleece

9.8-oz, 60/40 cotton/polyester fleece  
 Combed and RING SPUN cotton  
 Unlined hood with no drawstring  
 Flat lock seams  
 Modern fit with Zipper



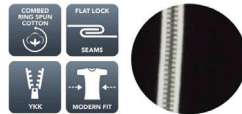
#### Product Features:

- 9.8 oz, 60/40 cotton/polyester lightweight fleece
- Combed and ring spun cotton
- Ultra soft 32 single cotton

Adult sizes: XS-4XL



#### Icons/Fabric Features:



## Ekomed Global Inc.

### GARMENT MEASUREMENTS

Size	XS	S	M	L	XL	2XL	3XL	4XL
Chest - Half Measure	17 3/4"	19 1/4"	20 3/4"	22 1/4"	23 3/4"	25 1/4"	27 1/4"	29 1/4"
Chest - Full Measure	35 1/2"	38 1/2"	41 1/2"	44 1/2"	47 1/2"	50 1/2"	54 1/2"	58 1/2"
Body Length from HPS	28 1/2"	29"	29 1/2"	30"	31"	32"	32 1/2"	33"
Sleeve Length-CB	34 3/4"	35 1/2"	36 1/4"	37"	37 3/4"	38 1/2"	39 1/2"	40 1/2"

Finished measurements in inches. Refer to "How to Measure" guide for detailed information on measurement instructions.

### ADULT General Sizing Guide

Size	XS	S	M	L	XL	2XL	3XL	4XL
Chest	30"-32"	34"-36"	38"-40"	42"-44"	46"-48"	50"-52"	54"-55"	56"-57"
Waist	26"-29"	29"-32"	32"-35"	35"-38"	38"-41"	41"-44"	44"-47"	47"-50"
Sleeve Length-CB	31"-32"	32"-33 1/2"	34"-35"	35"-36"	36"-37"	37"-38"	38"-39"	38 1/2"-39"



# Polos

100% Pique Cotton  
Poly Cotton 50/50  
Polyester  
polyester dry fit



# Polos

# 100% Pique Cotton

10.8-oz, 100% combe ring spun cotton pique  
Soil release treatment will remove  
most stains when washed

Rib knit collar  
Anti-Pill

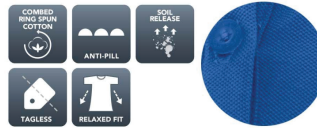


#### Product Features:

- 10.8-oz, 100% combed and ring spun cotton pique
- Soil release treatment will remove most stains when washed

Ladies' sizes: XS-4XL

#### Icons/Fabric Features:



## Ekomed Global Inc.

### GARMENT MEASUREMENTS

Size	XS	S	M	L	XL	2XL	3XL	4XL
Chest - Half Measure	18 1/2"	20"	21 1/2"	23"	24 1/2"	26"	28"	30"
Chest - Full Measure	37"	40"	43"	46"	49"	52"	56"	60"
Body Length from HPS	28"	29"	30"	31"	32"	33"	33 1/2"	34"
Sleeve Length-CB	17 3/4"	18 1/2"	19 1/4"	20"	20 3/4"	21 1/2"	22 1/4"	23"

Finished measurements in inches. Refer to "How to Measure" guide for detailed information on measurement instructions.

### ADULT General Sizing Guide

Size	XS	S	M	L	XL	2XL	3XL	4XL
Chest	30"-32"	34"-36"	38"-40"	42"-44"	46"-48"	50"-52"	54"-56"	56"-57"
Waist	26"-29"	29"-32"	32"-35"	35"-38"	38"-41"	41"-44"	44"-47"	47"-50"
Sleeve Length-CB	31"-32"	32"-33 1/2"	34"-35"	35"-36"	36"-37"	37"-38"	38"-39"	38 1/2"-39"

# Polly Cotton 50/50

# Polos

4.9-oz, 50/50 performance polyester/cotton

Self-fabric collar

3-button placket

Open sleeve

Moisture wicking

Breathable

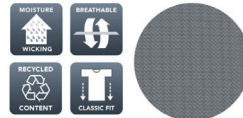


#### Product Features:

4.9-oz, 50/50 performance polyester/cotton  
polyester double-knit jacquard

Adult sizes: S-4XL

#### Icons/Fabric Features:



## Ekomed Global Inc.

### GARMENT MEASUREMENTS

Size	S	M	L	XL	2XL	3XL	4XL
Chest - Half Measure	20 1/2" - 21 1/2"	21 1/2" - 22 1/2"	23" - 24"	24 1/2" - 25 1/2"	26" - 27"	27 1/2" - 28 1/2"	29" - 30"
Chest - Full Measure	41" - 43"	43" - 45"	46" - 48"	49" - 51"	52" - 54"	55" - 57"	58" - 60"
Body Length from HPS	28" - 29"	29" - 30"	30" - 31"	31" - 32"	32" - 33"	33" - 34"	34" - 35"
Sleeve Length - CB	18 1/2" - 19"	19" - 19 1/2"	19 3/4" - 20 1/4"	20 1/2" - 21"	21 1/4" - 21 3/4"	22" - 22 1/2"	22 3/4" - 22 1/2"

Finished measurements in inches. Refer to "How to Measure" guide for detailed information on measurement instructions.

### ADULT General Sizing Guide

Size	S	M	L	XL	2XL	3XL	4XL
Chest	34"-36"	38"-40"	42"-44"	46"-48"	50"-52"	54"-55"	56"-57"
Waist	29"-32"	32"-35"	35"-38"	38"-41"	41"-44"	44"-47"	47"-50"
Sleeve Length-CB	32"-33 1/2"	34"-35"	35"-36"	36"-37"	37"-38"	38"-39"	38 1/2"-39"

# Polos

# polyester

6.3-oz, 100% performance polyester jersey  
 Self-fabric collar  
 Moisture wicking  
 Breathable



#### Product Features:

- 6.3-oz, 100% performance polyester jersey
- Reinforced topstitching throughout
- 3-button placket
- Side slits

Adult sizes: XS-4XL

#### Icons/Fabric Features:



## Ekomed Global Inc.

### GARMENT MEASUREMENTS

Size	XS	S	M	L	XL	2XL	3XL	4XL
Chest - Half Measure	18 1/2"	20"	21 1/2"	23"	24 1/2"	26"	28"	30"
Chest - Full Measure	37"	40"	43"	46"	49"	52"	56"	60"
Body Length from HPS	28"	29"	30"	31"	32"	33"	33 1/2"	34"
Sleeve Length-CB	17 3/4"	18 1/2"	19 1/4"	20"	20 3/4"	21 1/2"	22 1/4"	23"

Finished measurements in inches. Refer to "How to Measure" guide for detailed information on measurement instructions.

### ADULT General Sizing Guide

Size	XS	S	M	L	XL	2XL	3XL	4XL
Chest	30"-32"	34"-36"	38"-40"	42"-44"	46"-48"	50"-52"	54"-55"	56"-57"
Waist	26"-29"	29"-32"	32"-35"	35"-38"	38"-41"	41"-44"	44"-47"	47"-50"
Sleeve Length-CB	31"-32"	32"-33 1/2"	34"-35"	35"-36"	36"-37"	37"-38"	38"-39"	38 1/2"-39"

# polyester Dry Fit

# Hoodies

polyester Dry Fit 6.6-oz, 100% performance polyester  
No bleed fabric (NBF)

Self-fabric collar  
Moisture wicking  
Breathable

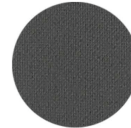


#### Product Features:

- 6.6-oz, 100% performance polyester double-knit jersey
- No Bleed Fabric (NBF) created with a unique cationic dye process for easy printing
- Double needle cover stitch at sleeve and bottom hem

Adult sizes: XS-4XL

#### Icons/Fabric Features:



## Ekomed Global Inc.

### GARMENT MEASUREMENTS

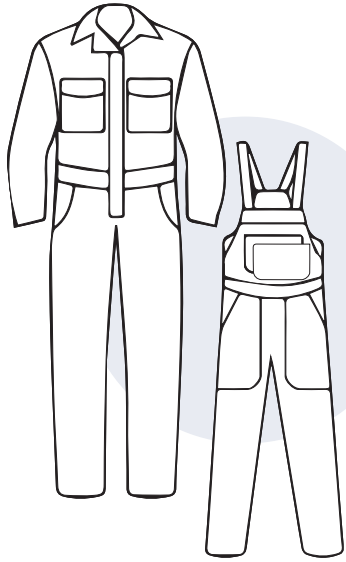
Size	XS	S	M	L	XL	2XL	3XL	4XL
Chest - Half Measure	18 1/2"	20"	21 1/2"	23"	24 1/2"	26"	28"	30"
Chest - Full Measure	37"	40"	43"	46"	49"	52"	56"	60"
Body Length from HPS	28"	29"	30"	31"	32"	33"	33 1/2"	34"
Sleeve Length-CB	17 3/4"	18 1/2"	19 1/4"	20"	20 3/4"	21 1/2"	22 1/4"	23"

Finished measurements in inches. Refer to "How to Measure" guide for detailed information on measurement instructions.

### ADULT General Sizing Guide

Size	XS	S	M	L	XL	2XL	3XL	4XL
Chest	30"-32"	34"-36"	38"-40"	42"-44"	46"-48"	50"-52"	54"-55"	56"-57"
Waist	26"-29"	29"-32"	32"-35"	35"-38"	38"-41"	41"-44"	44"-47"	47"-50"
Sleeve Length-CB	31"-32"	32"-33 1/2"	34"-35"	35"-36"	36"-37"	37"-38"	38"-39"	38 1/2"-39"





# Uniforms

Industrial

Overall

Pants

Shirts

Chef Coats



# Industrial

# Uniforms

7-oz, 65/35 polyester/cotton ripstop

Durable press with soil release and wickable finish

Two-piece lined collar

Two button-thru chest pockets

Bartacked pencil stall on left pocket

360° visibility with front and back 2" silver reflective striping

Garment is suitable for industrial laundry heavy soil wash setting

Garment is suitable for industrial laundry light soil wash setting

Garment is suitable for home laundry care

Durable press  
ichtex™ technology

UPF 40

Ripstop fabric

Classic fi



# Industrial

# Overall



### **Product Features:**

- 12-oz, 65/35 polyester/cotton twill
- Concealed zipper front with gripper closure at top of the zipper and lapel
- Two patch chest pockets
- Two front swing pockets
- Patch back pockets and rule pocket on right leg
- Hemmed long sleeves with adjustable snap closure
- Action back
- 2" yellow silver reflective striping

**Regular Sizes:** 38" - 60", inseam 30"

**Long Sizes:** 40" - 56", inseam 32"

### **Icons/Fabric Features:**

INDUSTRIAL  
LAUNDRY

IL-HS

LIGHT  
SOIL WASH

IL-LS

HOME  
WASH

HW



# Industrial

# Pants

12-oz, 65/35 polyester/cotton twill  
Brass zipper and snap waist closure  
Side elastic waistband  
Two slant front pockets  
Two patch back pockets  
Soil release finish  
Wrinkle resistant



Garment is suitable for industrial laundry heavy soil wash setting  
Garment is suitable for industrial laundry light soil wash setting  
Garment is suitable for home laundry care

# Shirts

# Industrial



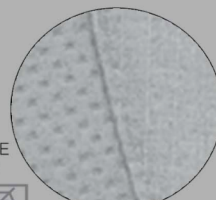
**Product Features:**

- 7.1-oz, 65/35 polyester/cotton ripstop
- 6.4-oz, 100% polyester performance mesh back panel
- Banded, lined collar with sewn-in stays with button at neck
- Two button-through, hex-style pockets with bartack reinforcement
- Bartacked pencil stall on left pocket

**Adult Sizes:** S-4XL

**Icons/Fabric Features:**

INDUSTRIAL LAUNDRY	LIGHT SOIL WASH	HOME WASH
IL-HS	IL-LS	HW
TOUCHTEX™ TECHNOLOGY	RIPSTOP FABRIC	DURABLE PRESS
TT	RIP	DP



7.1-oz, 65/35 polyester/cotton ripstop

6.4-oz, 100% polyester performance mesh back panel

Banded, lined collar with sewn-in stays with button at neck

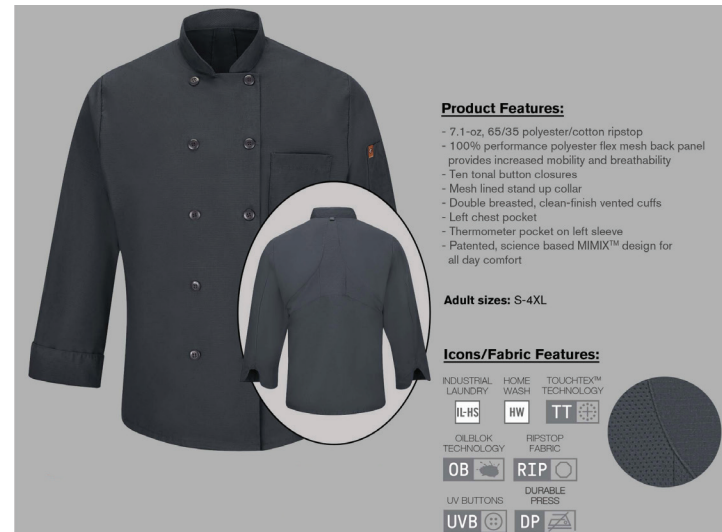
Two button-through, hex-style pockets with bartack reinforcement

Bartacked pencil stall on left pocket

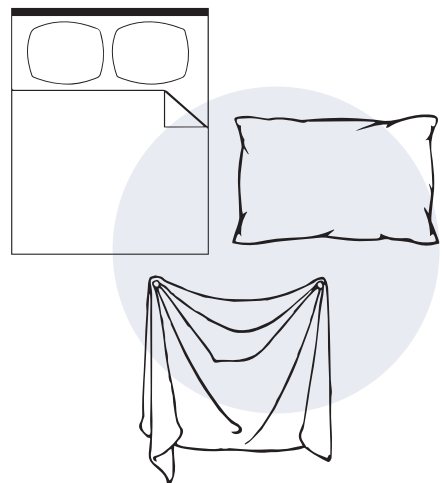
# Industrial

# Chef Coats

7.1-oz, 65/35 polyester/cotton ripstop  
100% performance polyester flex mesh  
Ten tonal button closures  
Mesh lined stand up collar  
Double breasted, clean-finish vented cuffs  
Left chest pocket  
Thermometer pocket on left sleeve  
Patented, science-based MIMIX™ design for all day comfort  
Garment is suitable for industrial laundry heavy soil wash setting  
Garment is suitable for home laundry care  
Durable press  
UV Buttons  
OilBlok Technology  
Touchtex™ Technology







# OTHERS

Courtans  
Bed Sheets  
Pillows



# Courtans

# Others



Our 100% Polyester luxurious faux-linen pair of 2 premium sheer window curtains are made from high-quality durable polyester that's easy to wash and resistant to tears and snugs. We offer short lengths 54 x 72, standard lengths 54 x 84, long lengths 54 x 96, and extra long 54 x 108 as well as super rare 54 x 120 and 54 x 132 inches We do all customs.



Thermal



Noise Reducing



Machine Washable



Grommet



Room Darkening



Single Curtain Panel

[+20  
More](#)



Charcoal



Vanilla



Teal



Beige



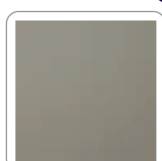
Sea Foam



Taupe



Mecca



Taupe



# Others

## Bed Sheets



Superior Quality and Comfort: Crafted from the highest quality double-brushed microfiber, our sheets deliver a luxurious, soft touch. The cool, breathable, and remarkably soft sheets offer a serene and restful sleep environment..



Machine washable



Wrinkle Resistant: Wrinkle Resistant

Pocket Depth

14"; 14" and under (Standard)

Features

Wrinkle Resistant; Machine Washable [EU Only]; Brushed

Feel

Warm & Cozy

Product Material

Microfiber / Polyester

Weave

Plain Weave

[+20 More](#)



Aqua



Black



Bright White



Brown



Burgundy



Cream



Eggplant



Grey

# Pillows

# Others



Our medium-density pillows. A 230 thread count, 100% cotton shell generously filled with 100% virgin hollow-slick polyester fibre for added durability.

It is designed for all sleep positions. This pillow is the perfect balance of cost-effectiveness and quality.



Medium



Machine Washable

Standard

Select

Queen

Select

King

Select

Overall	20" H X 30" W X 6"
---------	--------------------

Overall Product Weight	1.7 lb.
------------------------	---------



# Biodegradable material



# What is Biodegradable material



Biodegradable materials are materials that can safely be disposed of in the natural environment, where they decompose and breakdown completely, in the presence of microorganisms like bacteria and fungi found in soil.

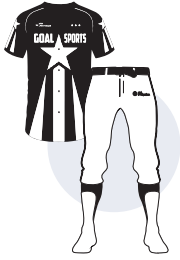
A truly biodegradable material breaks down completely, in less than a year, and leaves behind no residues or traces.

As we move towards more sustainable ways to live, we're increasingly looking for materials and products that are reusable, zero-waste, and eco-friendly – that do not contribute to our huge waste crisis.





# Our Biodegradable Products



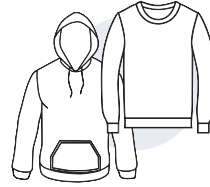
## Teamswear

Polyester  
V-Neck  
Crew Neck  
Long Sleeve



## T-shirt

100% Cotton  
Poly Cotton 50/50  
Combed Cotton  
Organic Cotton



## SweetShirts

### Hoodies

Polyester  
Fleece  
Cotton  
Zipper



## Polos

100% Pique Cotton  
Poly Cotton 50/50  
Polyester  
polyester dry fit





# Canada Headquarter Ekomed Global



EkoMed Global, Canada offers its customers many conveniences from storage, sales, finance to door-to-door shipping. EkoMed Canada Team has more than 20 years of industry experience. They provide “Health Canada” approved products to their Canadian customers.





## China manufacturing

No.71 Tuowu Road. Fenshui Town .tonglu, Hangzhou  
No:zhejiang province .China



### Canada Headquarters

3-5510 Mainway Burlington, ON L7L6C4

+16473306496

[sales@ekomedglobal.com](mailto:sales@ekomedglobal.com)



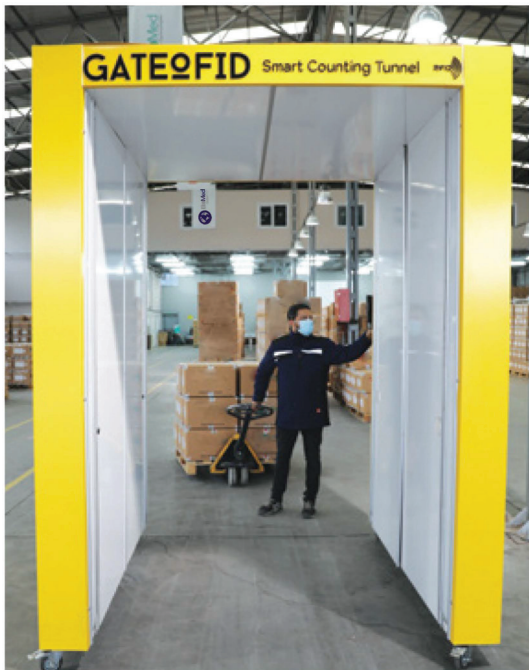


# Logistic and Transportation Facilities



Quality control and loading details of all products are inspected by artificial intelligence in the storage and management facility of EkoMed Global, located on a total area of 5,000 square meters, with the RFID coding system, all processes from production to shipment are made ready for shipment at the end-to-end control point, they deliver customers and EkoMed's distribution or storage points all over the world. The facility is located in a central area with easy access and close to sea and air cargo ports.

Within the facility, 3 separate inspection rooms have been specially designed for independent inspection companies and their employees.



# EkoMed Global Inc.

## contact Information

### Canada Headquarter

3-5510 mainway  
Burlington, ON. L7L 6C4  
Canada  
(Tel) +647 330 6496  
sales@ekomedglobal.com

### Europe

(Tel) +45 426 40 799  
zayana@ekomedglobal.com

### Middle East & Africa

(Tel) +416 831 4747  
serge@ekomedglobal.com

### China Manufacturing & Sterilization

NO.71 Zhe Wu Road, Fenshui Town  
Tonglu, Hangzhou, Zhejiang Province,  
China  
(Tel) +86 1506748 3435  
cooper@ekomedglobal.com

### Canada

(Tel) +647 330 6496  
sales@ekomedglobal.com

### Turkey Manufacturing

Istanbul, Turkey

### USA

(Tel) +1 917 553 3114  
wendy@ekomedglobal.com



[www.ekomedglobal.com](http://www.ekomedglobal.com)



**EkoMed**  
Textile



[www.ekomedglobal.com](http://www.ekomedglobal.com)